

september . 2006

volume 4 . number 9



NAVC

# clinician's brief®

THE OFFICIAL PUBLICATION OF THE NORTH AMERICAN VETERINARY CONFERENCE

A peer-reviewed journal

**Pulmonary Fibrosis:  
Addressing quality of life  
CONSULTANT ON CALL • 29**

**Are you a pro at  
abdominocentesis?  
PROCEDURES PRO • 49**

**Visual Aids: An engaging  
client education tool  
ASK THE EXPERT • 55**

**Should that aggressive dog  
be relinquished?  
APPLIED BEHAVIOR • 57**



**AND MORE . . .**  
ABNORMAL LUNG SOUNDS  
LENS CONDITIONS  
OSTEOARTHRITIS  
MANDIBULAR ABSCESS IN  
RABBITS  
MANAGING BURNS  
INTRODUCING:  
**CLINICIAN'S BRIEF BOOK CLUB**  
DEADLY NEW CALICIVIRUS  
PETS & PUBLIC HEALTH  
QUARANTINES





NAVC

# clinician's brief®

THE OFFICIAL PUBLICATION OF THE NORTH AMERICAN VETERINARY CONFERENCE

To Subscribe: Toll-free 866-749-0118 or 918-749-0118 or [www.cliniciansbrief.com](http://www.cliniciansbrief.com)

## advisory board



**Ralph E. Barrett, DVM,**  
Diplomate ACVIM  
Director, NAVC Regional  
Fair Oaks, California



**Eric R. Pope, DVM,**  
MS, Diplomate ACVS  
Associate Professor  
University of Missouri  
College of Veterinary  
Medicine  
Columbia, Missouri



**Katherine S. Gloyd, DVM**  
President  
The Gloyd Group, Inc.  
Wilmington, Delaware



**David F. Senior, BVSc,**  
Diplomate ACVIM &  
ECVIM-CA  
Department Head, Veterinary  
Clinical Sciences  
Professor of Medicine  
Louisiana State University  
School of Veterinary Medicine  
Baton Rouge, Louisiana



**Deborah S. Greco, DVM,**  
PhD, Diplomate ACVIM  
Staff Internist  
Medical Service  
The Animal Medical Center  
New York, New York



**R. Michael Thomas, DVM**  
Private Practice Owner  
Indianapolis, Indiana



**Lieutenant Colonel  
Bess J. Pierce, MZS, DVM,**  
Diplomate ABVP & ACVIM  
Commander, National Capital  
District Veterinary Command  
Fort Belvoir, Virginia



**Chris Wong, DVM**  
Head, Emergency Services  
VCA Sacramento Animal  
Medical Group  
Carmichael, California

*NAVC Clinician's Brief* is a peer-reviewed journal.  
See [www.cliniciansbrief.com](http://www.cliniciansbrief.com) for a listing of the members of our editorial review board.

*NAVC Clinician's Brief* is published monthly by Educational Concepts, LLC. Subscription rate: \$55.00 per year. Single copy: \$8.00. Payments by check must be in U.S. funds on a U.S. branch of a U.S. bank only; credit cards also accepted. All rights reserved. Reproduction in whole or in part without expressed written permission is prohibited. Copyright © 2006 Educational Concepts, LLC. ISSN 1542-4014. Periodicals postage paid at Tulsa, OK, and at additional mailing offices.

**POSTMASTER:** Send address changes to *NAVC Clinician's Brief*, PO Box 5032, Brentwood, TN 37024-9349. Canada Post publications mail agreement #40932038. Return undeliverable Canadian mailings to Circulation Dept; 7496 Bath Rd, Unit #2; Mississauga, ON L4T 1L2.

## navc officers & staff



**Editor in Chief/  
Executive Director**  
Colin F. Burrows  
BVetMed, PhD, MRCVS,  
Diplomate ACVIM  
[cfb@cliniciansbrief.com](mailto:cfb@cliniciansbrief.com)

**President**  
Philippe Moreau, DVM, MS, ECVFG, Diplomate  
ECVN & ECVIM-CA

**Immediate Past President/Director of  
Education**  
Richard DeBowes, DVM, MS, Diplomate ACVS

**President-Elect**  
Jorge Guerrero, DVM, PhD, Diplomate EVPC

**Vice-President**  
Linda Jacobson, DVM

**Secretary-Treasurer**  
Earl Rippie, Jr., DVM

**Directors**  
Ron Bright, DVM, MS, Diplomate ACVS  
Earl M. Gaughan, DVM, Diplomate ACVS  
Lynne Johnson, LVT  
Laurel Kaddatz, DVM  
Doug Mader, DVM, MS, Diplomate ABVP  
Aine McCarthy, DVM, MS  
M. Gatz Riddell, Jr., DVM, Diplomate ACT

**Conference Coordinator**  
David F. Senior, BVSc, Diplomate ACVIM &  
ECVIM-CA

**Director of NAVC Regional**  
Ralph E. Barrett, DVM, Diplomate ACVIM

**Director of Exhibits & Marketing**  
Donna Gindy

**Industry Liaison**  
John T. O'Brien

## published by

**Educational Concepts, LLC**



**Publisher/  
Editorial  
Director**  
Antoinette B.  
Passaretti

**President**  
Elizabeth Green

**Contributing Medical Editors**

Jennifer L. Schori, VMD  
Patricia Thomblison, DVM, MS

**Vice President, Sales & Marketing**  
John T. O'Brien

**Design/Production**  
Driscoll Design Inc.

**Assistant Editor**  
Kelly Soldavin

**For Subscription Inquiries:**

**Circulation Manager**  
Sondra Lyman  
T 918-749-0118 ext 206  
[sondra@cliniciansbrief.com](mailto:sondra@cliniciansbrief.com)

**Educational Concepts, LLC**  
2021 S. Lewis Avenue #630  
Tulsa, OK 74104  
T 918-749-0118 / F 918-749-1987  
[www.cliniciansbrief.com](http://www.cliniciansbrief.com)  
[info@cliniciansbrief.com](mailto:info@cliniciansbrief.com)

**Editorial Office**  
891 N. Easton Road  
Doylestown, PA 18901  
T 267-880-0580 / F 267-880-0582  
[toni@cliniciansbrief.com](mailto:toni@cliniciansbrief.com)

**Marketing & Advertising Sales**  
12118 Nieman Road  
Overland Park, KS 66213  
T 913-402-8383 / F 913-897-9047  
[john@cliniciansbrief.com](mailto:john@cliniciansbrief.com)

**Advertising Account Manager**  
Deirdre Putman  
T 918-749-0118 ext 208  
[deirdre@cliniciansbrief.com](mailto:deirdre@cliniciansbrief.com)

**Sales Administrator**  
Lisa Tagtmeyer  
T 913-402-8383 / F 913-897-9047  
[lisa@cliniciansbrief.com](mailto:lisa@cliniciansbrief.com)

**Marketing Coordinator**  
Kasey Littlefield  
T 918-749-0118 ext 207  
[kasey@cliniciansbrief.com](mailto:kasey@cliniciansbrief.com)







NAVC

# clinician's brief®

THE OFFICIAL PUBLICATION OF THE NORTH AMERICAN VETERINARY CONFERENCE

A peer-reviewed journal

contents

www.cliniciansbrief.com



## FROM NAVC

### Bombshells & Blessings

By Colin F. Burrows, BVetMed, PhD, MRCVS,  
Diplomate ACVIM

### WHAT'S THE TAKE-HOME?—Nuggets of knowledge from everyday cases

#### Chronic Osteoarthritis

By Steven Budberg, DVM, MS, Diplomate ACVS

### PROCEDURES PRO—How to do it, step by step

#### Surgical Treatment of Periapical Mandibular Abscess in Rabbits

By Vittorio Capello, DVM

### HOW TO REFER—Making the most of the process

#### Lens Conditions

By Michael H. Brown, DVM, MS (Comparative Ophthalmology), Diplomate ACVO

### DIAGNOSTIC TREE—Decoding key clinical signs

#### Abnormal Respiratory Sounds

By Leah A. Cohn, DVM, PhD, Diplomate ACVIM (Small Animal)

### CONSULTANT ON CALL—An expert imparts perspective

#### Idiopathic Pulmonary Fibrosis

By Leah A. Cohn, DVM, PhD, Diplomate ACVIM (Small Animal)

### CAPSULES—The current literature in brief:

#### Veterinary, Medical, Scientific, and Mass Media

Highlights: Cancer chemotherapy & immune responses, contaminated pet food, c-section, deadly calicivirus, gastrostomy tube alternative, intelligence in animals, surviving diabetic ketoacidosis, transdermal methimazole

### 4 PROCEDURES PRO—How to do it, step by step

#### Abdominocentesis

By Daniel D. Smeak, DVM, Diplomate ACVS

### ASK THE EXPERT

### 9 Visual Aids for Client

#### Communication

By Monica Dixon Perry, CVPM, and Sheila Grosdidier, BS, RVT

### APPLIED BEHAVIOR—Q&A of the month

#### Assessing Risk & Prognosis in Aggressive Dogs

By Debra F. Horwitz, DVM, Diplomate ACVB

### WHAT'S THE TAKE-HOME?—Nuggets of knowledge from everyday cases

#### Cat in a House Fire

By Karen A. Moriello, DVM, Diplomate ACVD, and Rosemary Henik, DVM, Diplomate ACVIM

### PRACTICE HOTLINE 6, 19, 63

### OUR AUTHORS 11

### AIDS & RESOURCES 64

### ADVERTISERS INDEX 64

## DID YOU KNOW...?

## Facts & Figures

■ The Le Royal Meridien King Edward hotel in Toronto offers a Doggie High Tea. The canine patrons' fare includes cheddar and garlic bones, pumpkin pawprints, peanut butter treats, and beef and chicken broth tea. The cost? Just \$15 plus tax and gratuities.—*Charlotte's Web Newsletter*, 7/31/06

■ Houston ranked the lowest in the recent survey on responsible poop scooping—other cities low on the list included Atlanta, Dallas, and Phoenix. The highest ranked and most responsible? San Francisco, Los Angeles, Chicago, and Philadelphia.—*Press release*, 5/5/06

■ The National Association of Veterinary Technicians is celebrating its 25th anniversary this year. During this time, NAVTA has created strategic relationships with veterinary associations, established a quality journal, expanded educational opportunities for technicians, and developed specialties in critical care, anesthesia, and dentistry.—*Press release*, 6/2/06

■ Women now represent 73% of veterinary students and nearly 50% of practicing veterinarians. In response to this trend, Bayer is offering interactive professional development seminars for women veterinarians. The first Advancing the Profession seminar was held in December 2005 and seminars are continuing in 2006.—*Press briefing*, 7/17/06



Want us to cover a topic? Have a question for an author or for Ask the Expert? Contact us at [www.cliniciansbrief.com](http://www.cliniciansbrief.com)



# Surgical Treatment of Periapical Mandibular Abscess in Rabbits

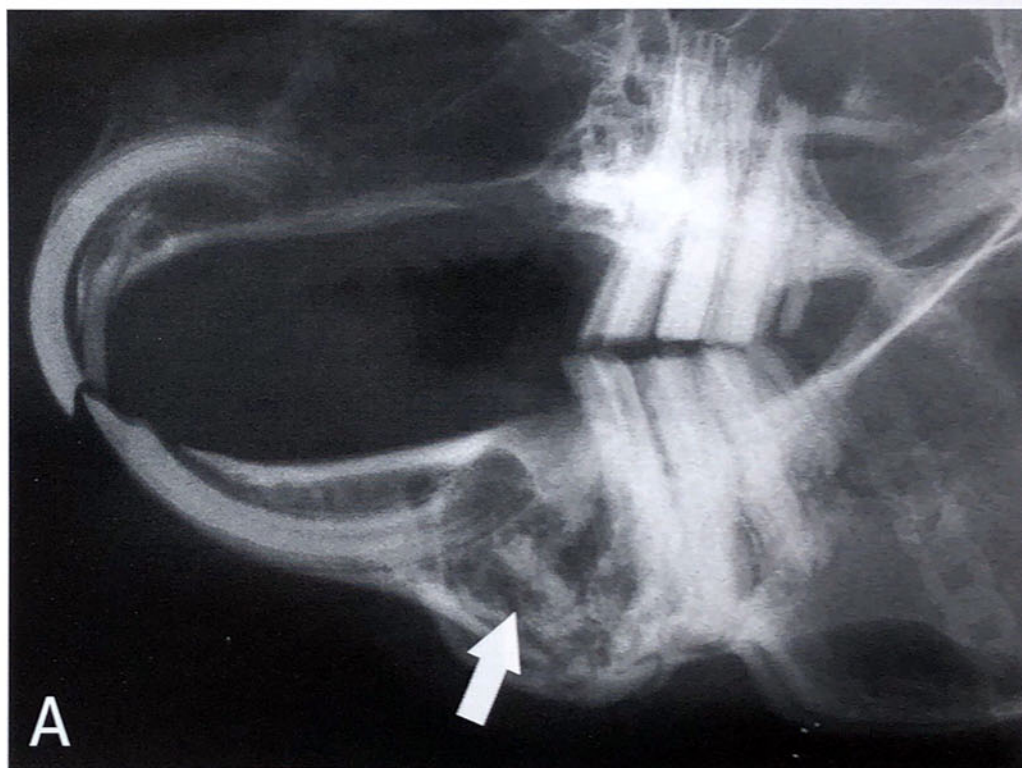
Vittorio Capello, DVM, Clinica Veterinaria S Siro, Clinica Veterinaria Gran Sasso, Milan, Italy

**F**ormation of dental-related abscesses is common in pet rabbits. Most facial abscesses are a sequela to acquired dental disease, particularly dental disease as a result of metabolic bone disease or tooth fracture. Frequently, they develop from periapical infection of mandibular cheek teeth and typically involve both hard and soft tissues. Therefore, common radiographic abnormalities include a fragment of a mandibular cheek tooth associated with mandibular osteomyelitis. The cheek tooth fragment is usually visible in a circular radiolucent lesion that contains purulent material (**Figure A**).

The abscess develops gradually and can become very large relative to the size of the patient. In rabbits and rodents, abscesses are usually not painful, do not affect prehension of food and chewing, and do not cause hyperthermia. They are surrounded by a very thick capsular wall and usually contain white, dense, creamy purulent material. Facial abscesses rarely respond to antibiotic therapy alone. Treatment must include surgical intervention, and aggressive debridement is generally recommended.

A number of techniques have been proposed, including simple flushing after incision and/or introduction of antibiotic-impregnated polymethylmethacrylate beads. In the author's experience, the highest rate of success is achieved with:

- Surgical excision and debridement of the entire abscess, including the capsule



- Extraction of affected tooth/teeth
- Debridement of the infected/necrotic bone
- Marsupialization of the soft tissues
- Frequent postoperative flushing and debridement of the site
- Application of antiseptics, antibiotics, and/or products to promote healing into the surgical site until complete healing occurs by secondary intention.

Patients should be evaluated and selected carefully before performing surgery. A complete and accurate diagnosis based on clinical and radiographic findings is critical to determine prognosis. Of equal importance is the

level of expected owner compliance, as these patients will require frequent postsurgical examinations (in some cases for the rest of the patient's life) and moderately intensive home care. Owners should also be informed that, after this procedure, the rabbit may be temporarily unappealing cosmetically.

Poor owner compliance may result in disappointing overall outcomes. It should be taken into consideration that in cases of very severe dental disease, complications, or poor prognosis, euthanasia may be the most appropriate and humane choice for the welfare of the patient.

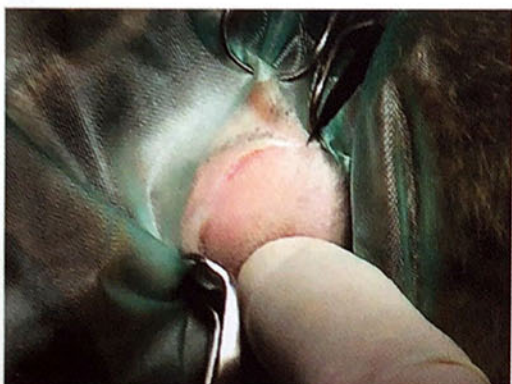
continues



## STEP BY STEP HOW TO TREAT PERIAPICAL MANDIBULAR ABSCESS IN RABBITS



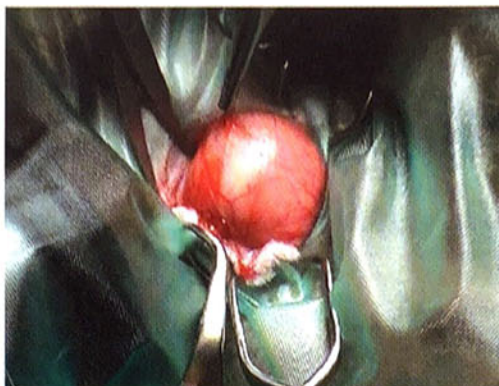
**1** Place the anesthetized rabbit in lateral or dorsal recumbency, depending on the site of infection. Shave and aseptically prepare the area. The rabbit is shown here with anesthetic face mask in place.



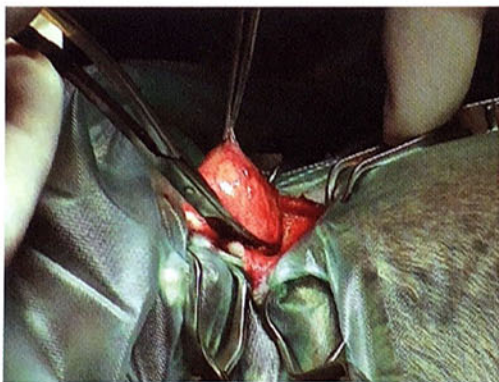
**2** Make a skin incision over the mass, taking care not to incise the capsule and to avoid entering the underlying abscess.

### PROCEDURE PEARL

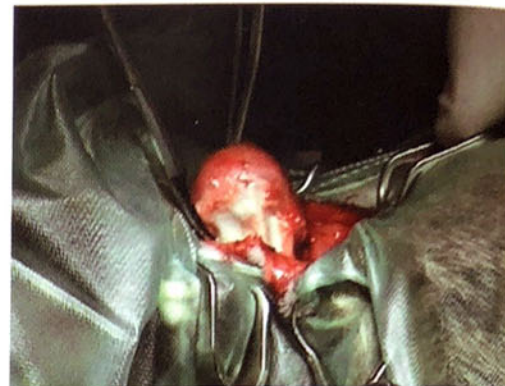
A transparent drape (preferably adhesive) facilitates the view of the orientation of the head and anesthetic monitoring.



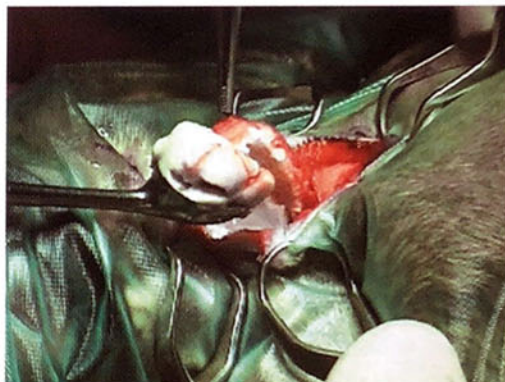
**3** Dissect free subcutaneous and muscle layers to expose as much of the abscess capsule as possible.



**4** When most of the capsule has been dissected free, incise its junction with the mandibular bone using a scalpel blade or pointed scissors. In cases of periapical mandibular abscesses, the wall of the mass is typically composed of thick connective tissue and thin cortical bone, which prevents removal of the entire capsule in one piece. The remaining part of the capsule can be carefully debrided later, using a curette. In case of mandibular abscesses that do not affect the apex, actually about half of the abscess wall is the capsule, and the other half is "carved" into the bone (which will be debrided).



**5** After the incision, carefully dissect free and remove the lateral wall of the abscess.



**6** Remove the purulent material using a Volkmann spoon or cotton swabs, and flush the bone cavity.

### PROCEDURE PEARL

When incising the skin over the mass, the surgeon should take care not to incise the capsule and disrupt the underlying abscess.

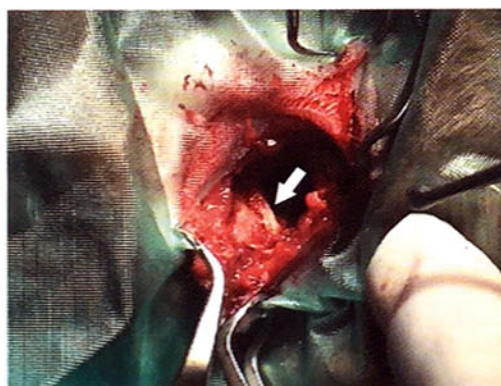
### PROCEDURE PEARL

Samples for culture and sensitivity should be collected from the capsule wall, as the purulent material itself is usually sterile.

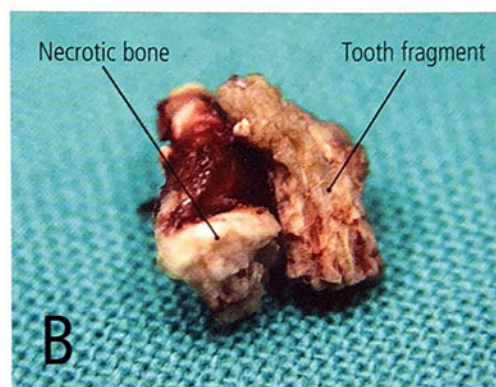




**7** Debride the bone cavity thoroughly using a bone curette to remove the remaining debris and purulent material. Debride the infected or necrotic cortical bone to the point of bleeding using a small pair of rongeurs or needle holders. Keep in mind that this step alone will not be enough to resolve osteomyelitis. Failure to remove all of the infected or necrotic cortical bone results in a high rate of treatment failure.



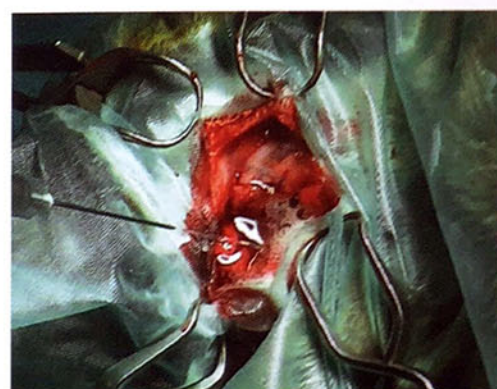
**8** When debridement is complete, the involved cheek tooth/teeth or their fragments can be seen directly from the osteotomy site. A Crossley's luxator for cheek teeth or a hypodermic needle may be used gently to free the attachment of the tooth fragment to the bone.



**9** Extract the involved tooth/teeth using small extraction forceps or a needle holder (A). The teeth or fragments are sometimes deformed and may be attached to a fragment of necrotic osteomyelitic alveolar bone (B). The diseased overgrown premolar and molar teeth extracted from sites of abscessations have a typical "L-shaped" deformity of the apex (C).

#### PROCEDURE PEARL

During the delicate extraction phase, it is important to prevent accidental fracture of the mandible, which is more likely when bone osteolysis due to bone infection is severe.



**10** Debride once again and thoroughly flush the bone cavity with saline. After surgical debridement of the osteomyelitic site, the bone appearing at the bottom of the cavity is actually the lateral side of the medial cortex of the mandible.

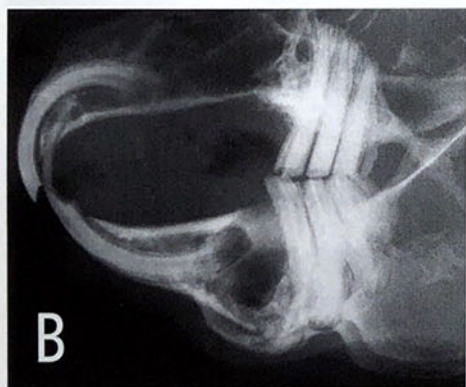


**11** Perform marsupialization of the soft tissues around the surgical site using 3-0 suture material, which will allow the postoperative flushing and debridement that is critical for healing by

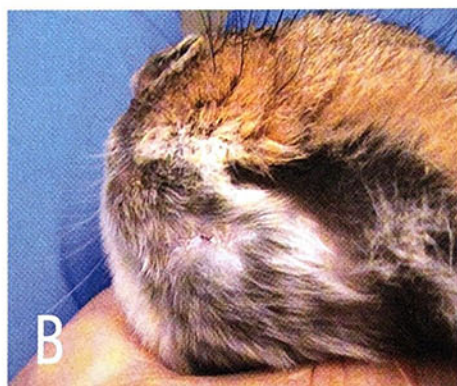
continues



secondary intention. In the author's experience, this procedure highly reduces the risk of recurrence. The method requires a longer and more difficult posttreatment period; however, the ability to access the surgical site directly makes this method preferable to implantation of antibiotic-impregnated beads or other similar techniques.



**12** Owners should be prepared for the typically unattractive postoperative appearance of marsupialization of soft tissues (A). The postoperative radiograph shows a wide radiolucent area corresponding to the debrided bone site, and the tooth fragment is no longer visible (B).



**13** Sutures are usually removed from the marsupialization site 10 to 12 days postoperatively. After 2 weeks, the bone cavity is filling with new connective tissue and other deep soft tissues are healing, reducing the size of the fistula (A). In about another week, the overlying skin will be completely healed (B). Longer term follow-up (6 to 8 weeks after surgery) includes radiographic evaluation to demonstrate remodeling and apposition of new bone in previous sites of osteomyelitis. ■

**Figures A, 9A, 9B, and 12B.** Reprinted from *Extraction of cheek teeth and surgical treatment of periodontal abscessations in pet rabbits*. Capello V. *Exotic DVM* 6.4:31, 2005; and *Rabbit and Rodent Dentistry Handbook*. Capello V. Lake Worth, FL: Zoological Education Network, 2005, with permission. [www.exoticdvm.com](http://www.exoticdvm.com)

## Postoperative Care

Postoperative care following marsupialization includes daily flushing, frequent debridement of hard and soft tissues, local application of an antimicrobial ointment, and administration of systemic antibiotics and analgesics. Anorexic rabbits must be encouraged to eat as soon as possible after surgery. Commercial hand-feeding products, such as Oxbow Critical Care (Oxbow Enterprises; [www.oxbowhay.com](http://www.oxbowhay.com)) are excellent for this purpose. Adjunct fluid therapy may be necessary.

Some owners may be able to perform part of the postoperative care at home. Rabbits can usually be adequately and safely restrained and local therapy performed without sedation. The use of an Elizabethan collar to protect the surgical site is seldom necessary. Frequent recheck examinations are mandatory for a successful outcome and should be discussed with the owner prior to surgery.

See Aids & Resources, back page, for references, contacts, and appendices.